



our own  
a p p a r e l

performance undergarments



Patent Number:  
US D745,249 S



our own  
a p p a r e l



### COLORS:

Black and white are always in stock. Other colors can be custom ordered for quantities of 500 or more.

### UNISEX SIZES:

S M L XL XXL

Please refer to the Size Chart on page 7 to identify your individual or team sizing.

### BACK OPTIONS:

Full back and underarm protection

Underarm protection only



### Unisex Cut- Off

The Unisex Cut-Off crew neck is our shirt with the least protection. This style still has the double protection under the arm and down the back available.



### Unisex Short Sleeve

The Unisex Short Sleeve crew neck is our best seller with solid protection and flexibility.



### Unisex Long Sleeve

The Unisex Long Sleeve crew neck is our style with the most protection: best for the cold months or cold buildings.



## the crew

The crew is technologically designed to protect your clothing by capturing sweat, oils, and odor. It performs well under work wear and uniforms in diverse industries.

Recommended industries for the crew:

healthcare



entertainment



business & transportation



law enforcement



athletics



# Unisex Styles:



## the v-neck

The v-neck is technologically designed to protect your clothing by capturing sweat, oils, and odor. It performs well under work wear and uniforms in diverse industries. This variation in neck style provides a great alternative to the crew.

Recommended industries for the v-neck:



healthcare



entertainment



business & transportation



law enforcement



### Unisex Cut- Off

The Unisex Cut-Off V-neck is our shirt with the least protection. This style still has the double protection under the arm and down the back available.



### Unisex Short Sleeve

The Unisex Short Sleeve V-neck is our best seller with solid protection and flexibility.



### Unisex Long Sleeve

The Unisex Long Sleeve V-neck is our style with the most protection: best for the cold months or cold buildings.

### COLORS:

Black and white are always in stock. Other colors can be custom ordered for quantities of 500 or more.



### UNISEX SIZES:

S M L XL XXL

Please refer to the Size Chart on page 7 to identify your individual or team sizing.

### BACK OPTIONS:

Full back and underarm protection

Underarm protection only





## Unisex Styles:

### COLORS:

Black and white are always in stock. Other colors can be custom ordered for quantities of 500 or more.

### UNISEX SIZES:

S M L XL XXL

Please refer to the Size Chart on page 7 to identify your individual or team sizing.

### BACK OPTIONS:

Full back and underarm protection

Underarm protection only



### Unisex Cut- Off

The Unisex Cut-Off mock neck is our shirt with the least protection. This style still has the double protection under the arm and down the back available.



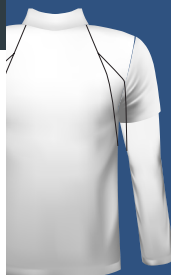
### Unisex Short Sleeve

The Unisex Short Sleeve mock neck is our best seller with solid protection and flexibility.



### Unisex Long Sleeve

The Unisex Long Sleeve mock neck is our style with the most protection: best for the cold months or cold buildings.



## the mock

The mock is technologically designed to protect your clothing by capturing sweat, oils, and odor. It performs well under work wear and uniforms in diverse industries. This variation in neck style provides a sleek option for uniforms worn outdoors or in cold workspaces.

Recommended industries for the mock:

healthcare



business & transportation



law enforcement



Patent Number:  
US D739,118 S

## Women's Styles:



# the women's undershirt

The Women's Undershirt is technologically designed to protect your clothing by capturing sweat, oils, and odor. Wearing colors, shirts, and jackets that complement you will not be an issue anymore.

Recommended industries for women's undershirt:



entertainment



business & transportation

Women's Sizing: XS S M L XL XXL, same custom color options as unisex shirts.

Lauren@our-ownproducts.com

### Above the bra tank

This design has no sleeve but still has our under the arm protection. This allows you to wear a cooler range of garments with confidence.



### Below the bra tank

The tank has no sleeve but still has our underarm protection. This allows you to wear a cooler range of garments. The front dips below bra to hide the undershirt, allowing you to wear it under any type of blouse or shirt.



### Above the bra cap sleeve

The sleeve hits right over the shoulder for shorter sleeved women's garments.



### Below the bra cap sleeve

The sleeve hits right over the shoulder for shorter sleeved women's garments. The front dips below the bra to hide the undershirt, allowing you to wear it under any type of blouse or shirt.



### Above the bra regular sleeve

The sleeve hits mid-arm for comfort under any blouse or shirt.

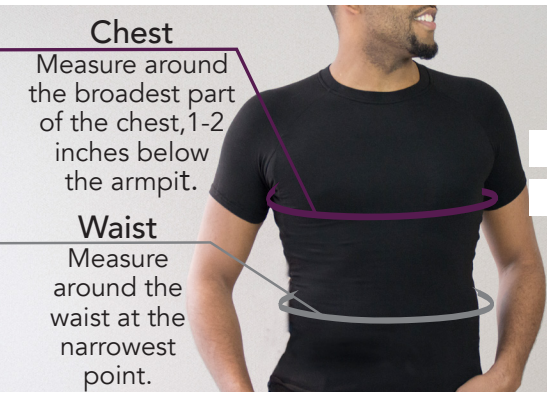


### Below the bra regular sleeve

Sleeve hits mid-arm for comfort; the front dips below the bra to hide the undershirt, allowing you to wear it under any type of blouse or shirt.



# Sizing

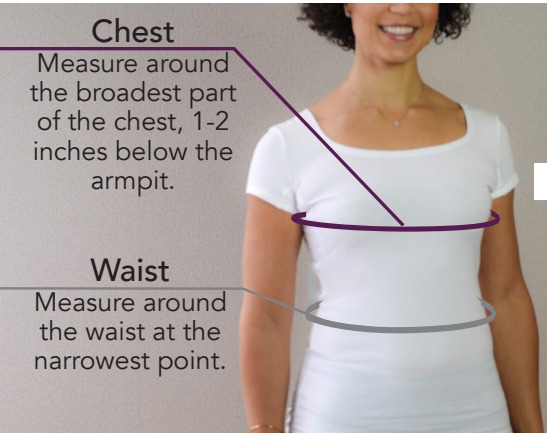


## Chest

Measure around the broadest part of the chest, 1-2 inches below the armpit.

## Waist

Measure around the waist at the narrowest point.



## Chest

Measure around the broadest part of the chest, 1-2 inches below the armpit.

## Waist

Measure around the waist at the narrowest point.

## Unisex Sizing

	S	M	L	XL	2XL	3XL
Chest	36	38	41	44	52	56
Waist	35	37	40	42.4	50	54

Because our fabric contains 4% spandex, bust and waist measurements in our unisex sizes can expand \*4 inches upward from numbers presented above.

**\*Note:** if your measurement is at the end of the 4 inch expansion range it will be a snugger fit.

## Women's Sizing

	XS	S	M	L	XL	2XL
Size	0-2	4-6	8-10	12-14	16	18

**Size:** The size number you wear when purchasing other female clothing.

**Note:** on the under bra styles bust measurement is not needed, only waist.

# Time To Perform!



## your order

### Sampling:

We understand product sampling is a part of the process, and we want you to understand the benefits of our products first hand. We allow 1-2 discounted shirt samples depending on the potential order size.

1 Sample - Any order size 10-100  
2 Samples - Any order over 100

### Ready To Order:

Complete the form on the next page.  
Call us if assistance is needed.  
517-410-9916

### Shipment:

Depending on your order, turnaround time will be determined after form is submitted.

### Pricing:

\$19.00 - \$27.00 depending on style,color, and quantity. Price approval will be done with estimate.

#### STEP 1

Select desired:  
Style,Color, Back Option



#### STEP 2

Fit your team using  
sizing chart. Record sizes  
and names.



#### STEP 3

Complete form, scan and  
send to us as an email  
attachment. We will then  
provide an estimate.



#### STEP 4

Once estimate is approved  
an invoice will be sent for  
your signature. Order will  
be processed immediately and  
shipped as soon as possible.







# Request Form



Company Name:

Contact Name:

Phone Number:

Department:

Contact Email:

Shipping Address:

## Customer Specific Request

Do you need chemically treated fabric?  
(Circle one)

**None**   **Antimicrobial**   **Fire Retardant**

Do you want company logo on shirt?  
(Circle one)

**No**   **Screen Print**   **Embroidery**

Lauren@our-ownproducts.com

	Qty.	Style
XS <small>(Women's)</small>		
S		
M		
L		
XL		
XXL		
3XL <small>(Unisex)</small>		

Color/Pantone # if custom shirt color requested:

Additional information:



our own  
apparel

300 S. Washington Square, Suite 100  
Lansing, MI 48933 • 517.410.9916